

RECORDED

NW CORNER SECTION 12 T 17N

TABLER COUNTY  
CHEYENNE, WY.

CERTIFIED LAND CORNER RECORDATION

'89 MAY 30 AM 11:27

DESCRIPTION OF CORNER EVIDENCE FOUND, AND ORIGINAL RECORD (if known)

NOTE: THIS CORNER RECORDATION REPLACES THE CORNER RECORDATION FILED BY ME ON APRIL 27, 1988 AND MISMARKED AS THE NW CORNER OF SECTION 12 (THE TIES FILED ARE TO THE NW CORNER OF SECTION 11 T 17N R 65W)

FOUND ORIGINAL STONE, BROKEN, SUBSEQUENT SURVEY VERIFIED ITS POSITION.

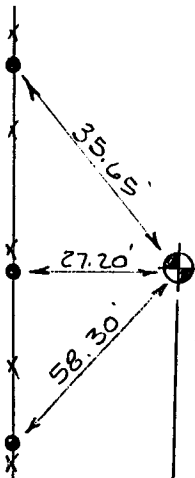
DESCRIPTION OF MONUMENT AND ACCESSORIES ESTABLISHED TO PERPETUATE THE ORIGINAL LOCATION OF THIS CORNER:

REPLACED THE BROKEN STONE WITH A CORPS OF ENGINEERS BRASS CAP SET ON A 30" X 5/8" REBAR, SET THE STONE ALONG SIDE THE BRASS CAP. TIED AS SHOWN BELOW.

SKETCH, WITH COURSE AND DISTANCE TO ADJACENT CORNER IF DETERMINED IN THIS SURVEY. (May Sketch or Paste Reproduction on Reverse Side.)



SET "PK" NAIL & CAP IN FENCE POST (TYP)



NORTH EAST CORNER  
SECTION 12  
T 17N  
R 65W



I, Wallace C. Muscott certify that I have carefully performed or reviewed the work done on the diagrammed corner as reported on this recordation form and approve the same.

Wallace C. Muscott 3830  
Signature of Surveyor Registration No.

STATE OF WYOMING,  
Office of Clerk and Recorder,  
County of \_\_\_\_\_

This "corner record" was filed for record on the \_\_\_\_\_ day of \_\_\_\_\_, 19\_\_\_\_, was noted on the cross-index plat and is assigned page No. \_\_\_\_\_, in book No. \_\_\_\_\_

Janet C. Whitehead  
County Official

Cross Index No. <u>E-25</u>	T. <u>17N</u>	R. <u>65W</u>	Mer. <u>6<sup>th</sup></u>
_____	T. _____	R. _____	Mer. _____
_____	T. _____	R. _____	Mer. _____
_____	T. _____	R. _____	Mer. _____
_____	T. _____	R. _____	Mer. _____
_____	T. _____	R. _____	Mer. _____
_____	T. _____	R. _____	Mer. _____